

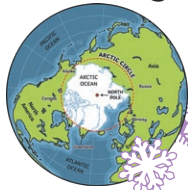
All About

Reindeer

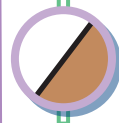
Reindeer are a type of deer. Young reindeer are called calves. Reindeer travel together in a herd.

Where Do They Live?

Wild reindeer live in countries with colder weather, such as Canada and Greenland. Many live in forests. Many live in treeless areas in the Arctic.



What Do Reindeer Look Like?



Reindeer can be white in winter and brown in summer.



They have a coat with two layers of hair.



They grow antlers.



What Do They Eat?

Reindeer mainly eat plants. Some also eat mushrooms and fish.



What Are Reindeer Like?



Reindeer are very good swimmers.



They have a great sense of smell.



Their footpads shrink in winter. This helps them walk across snow.



Questions



1. What are young reindeer called? Tick one.

- ☐ puppies
- ☐ kids
- ☐ calves

2. What do reindeer travel in? Tick one.

- ☐ pack
- ☐ herd
- ☐ flock

3. What do reindeer grow? Tick one.

- ☐ tusks
- ☐ antlers
- ☐ horns

4. **They have a great sense of** _____.
Tick one.

- ☐ smell
- ☐ sight
- ☐ hearing

5. What happens to the footpads of reindeer in the winter? Tick one.

- ☐ They grow.
- ☐ They turn red.
- ☐ They shrink.

Answers



1. What are young reindeer called? Tick one.

- ☐ puppies
- ☐ kids
- ☒ **calves**

2. What do reindeer travel in? Tick one.

- ☐ pack
- ☒ **herd**
- ☐ flock

3. What do reindeer grow? Tick one.

- ☐ tusks
- ☒ **antlers**
- ☐ horns

4. **They have a great sense of** _____.
Tick one.

- ☒ **smell**
- ☐ sight
- ☐ hearing

5. What happens to the footpads of reindeer in the winter? Tick one.

- ☐ They grow.
- ☐ They turn red.
- ☒ **They shrink.**

All About

Reindeer

Reindeer live in the wild or can be taken care of by humans. Male reindeer are called bulls, females are called cows and their young are called calves. Reindeer like to move around a lot and they travel together in a herd to look for food.

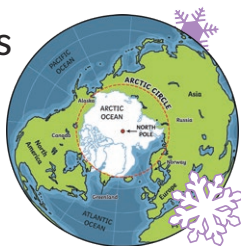
What Do Reindeer Look Like?

Reindeer can change colour from white in winter to brown in summer. They have a thick coat with two layers of hair which helps to keep them warm during cold weather. Both male and female reindeer grow antlers. They shed them and grow a new set each year.



Where Do They Live?

Many wild reindeer can be found in countries with colder climates, such as Norway, Canada and Greenland. Many live in forests or treeless areas in the Arctic called tundra.



What Do They Eat?

Reindeer mainly eat plants, leaves and grass and some also eat mushrooms and fish. They use their antlers and hooves to sweep away snow to reach food.



What Are Reindeer Like?

Reindeer are excellent swimmers and their body is adapted to the cold weather in which they live. Their footpads shrink and tighten in the winter to help the reindeer walk across snow and ice.

Did You Know...?

Reindeer have a great sense of smell to help them find food.

All About Reindeer



Questions



1. What do reindeer shed each year? Tick one.

- ☐ hooves
- ☐ antlers
- ☐ tails

2. Draw **three** lines and match each type of reindeer to what they are called.

female reindeer •

male reindeer •

young reindeer •

• calves

• cows

• bulls

3. Number the facts from 1-4 to show the order in which they appear in the text.

- ☐ Reindeer are excellent swimmers.
- ☐ The footpads of reindeer shrink and tighten in the winter.
- ☐ Reindeer live in the wild or can be taken care of by humans.
- ☐ Reindeer have a coat with two layers of hair.

4. Fill in the missing word.

Reindeer mainly eat plants, leaves and grass and some also eat _____ and fish.

5. Look at the first paragraph.

Find and copy one word which means the same as 'a group of reindeer'.

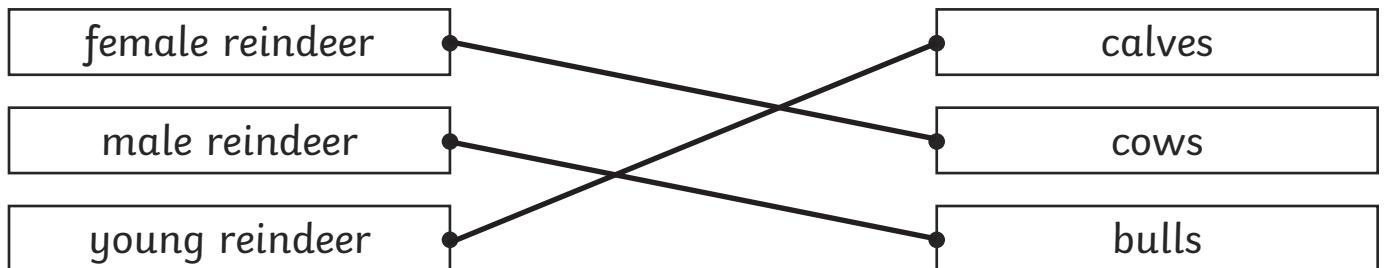
Answers



1. What do reindeer shed each year? Tick one.

- ☐ hooves
- ☒ **antlers**
- ☐ tails

2. Draw **three** lines and match each type of reindeer to what they are called.



3. Number the facts from 1-4 to show the order in which they appear in the text.

- 3** Reindeer are excellent swimmers.
- 4** The footpads of reindeer shrink and tighten in the winter.
- 1** Reindeer live in the wild or can be taken care of by humans.
- 2** Reindeer have a coat with two layers of hair.

4. Fill in the missing word.

Reindeer mainly eat plants, leaves and grass and some also eat **mushrooms** and fish.

5. Look at the first paragraph.

Find and copy one word which means the same as 'a group of reindeer'.

herd



Reindeer are a type of deer and they live in the wild or can be taken care of by humans. Male reindeer are called bulls, females are called cows and their young are called calves. Reindeer like to move around a lot and they travel together in a herd to look for food. They may form a super-herd in spring which can be between 50,000 to 500,000 animals!

Where Do They Live?

Many wild reindeer can be found in countries with colder climates, such as Norway, Finland, Alaska, Canada and Greenland. They live in forests or the Arctic **tundra**.

What Do Reindeer Look Like?

Reindeer can vary in colour as their coat can change from white in winter to brown in summer. They have a thick coat with two layers of hair which helps to keep them warm during cold weather. One of the main features of reindeer is their antlers. Both the males and females grow them but the males' antlers are usually bigger. Reindeer shed their antlers and grow a new set each year.



What Do They Eat?

Reindeer mainly eat a plant-based diet that includes **lichens**, herbs, leaves and grass and some also eat mushrooms and fish. They use their antlers and hooves to sweep away snow to access food.

What Are Reindeer Like?

Reindeer are excellent swimmers and their body is adapted to the cold weather in which they live. They have a great sense of smell to help them find food in the snow and their noses are able to warm the cold air that they breathe in. Their footpads change during the seasons. They shrink and tighten in the winter to help the reindeer walk across snow and ice while they become softer in the summer.

All About Reindeer



Glossary

lichens:

Small plants that grow over rocks, walls and trees.

tundra:

A treeless area that is found in cold regions.



Questions



1. Number the facts from 1-4 to show the order in which they appear in the text.

- ☐ Reindeer live in forests or the Arctic tundra.
- ☐ Reindeer can vary in colour.
- ☐ Reindeer are excellent swimmers.
- ☐ Male reindeer are called bulls.

2. Circle **one** word that means the same as 'get rid of'.

Reindeer shed their antlers and grow a new set each year.

3. Name **two** countries that are mentioned in the text where wild reindeer can be found.

- _____
- _____

4. Fill in the missing word.

Reindeer are excellent swimmers and their body is
_____ to the cold weather in which they live.

5. Look at the sub-heading **What Are Reindeer Like?** Find and copy one word which means the same as 'get smaller'.

6. The author tells us that reindeer use their antlers to sweep away snow to access food. What else do you think they may use their antlers for?

Answers



1. Number the facts from 1-4 to show the order in which they appear in the text.

- 3** Reindeer live in forests or the Arctic tundra.
- 2** Reindeer can vary in colour.
- 4** Reindeer are excellent swimmers.
- 1** Male reindeer are called bulls.

2. Circle **one** word that means the same as 'get rid of'.

Reindeer shed their antlers and grow a new set each year.

Award 1 mark for:

- shed

3. Name **two** countries that are mentioned in the text where wild reindeer can be found.

Accept any two of the following: Norway; Finland; Alaska; Canada; Greenland

4. Fill in the missing word.

Reindeer are excellent swimmers and their body is **adapted** to the cold weather in which they live.

5. Look at the sub-heading **What Are Reindeer Like?** Find and copy one word which means the same as 'get smaller'.

shrink

6. The author tells us that reindeer use their antlers to sweep away snow to access food. What else do you think they may use their antlers for?

Pupils' own responses, such as: I think that reindeer may use their antlers to defend themselves from other animals that may want to attack them.